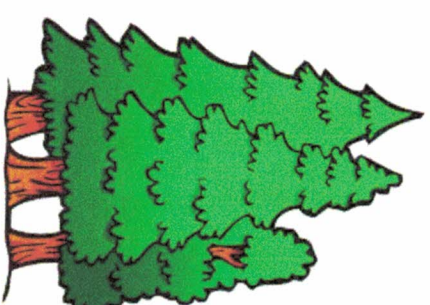
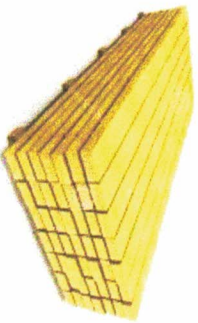


Our Resource-Based Economy

Always +/- in
Balance!

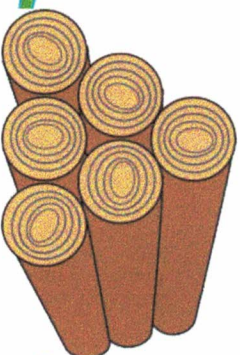
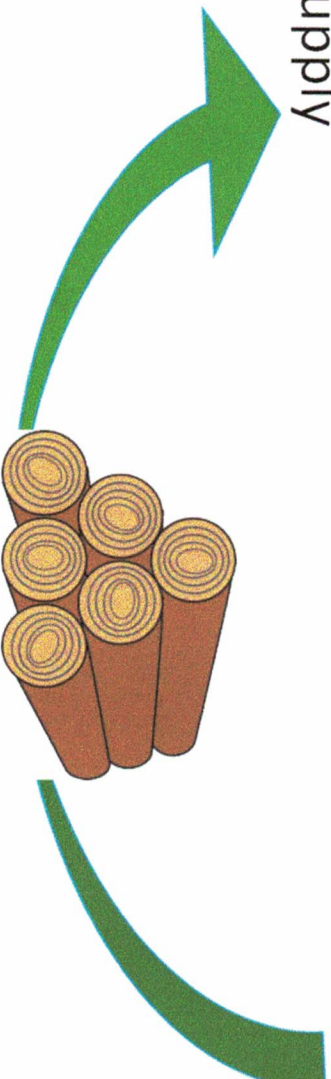


Forest Landowners
need "**Markets**" to
sell their Logs & Fiber

Resource
Lands

Forest Products
Industry needs
"**Certainty**" on
Log Supply

InfraStructure



Why North Idaho Private Forestlands are Important to our Economy and our Communities

Sources of Timber Supply by Forest Ownership for 6 North Idaho Mills

02/14/18

Total Log Volume: 470 mmbf

Total Employees: 822

Forest Ownership	mmbf	%
Industrial	235	50.0%
Small PVT	105	22.3%
British Columbia	37	7.9%
State (ID,WA,MT)	60	12.8%
Federal	33	7.0%
Total	470.00	100.0%

Mill Data included in this Chart

- 1) IFG - Moyle
- 2) IFG - LaCiede
- 3) IFG - Chilco
- 4) Alta - Naples
- 5) Stimson - Priest River
- 6) Stimson - Plummer



Conservation Easements

- CE's restrict commercial development, subdivision, mining.
- Landowners continues to own the land
- All traditional uses are allowed (Ag, Forestry, Livestock, cottage industries, rentals, gravel pits). ***“Working Resource Lands”***
- Homes/shops/barns/outbuildings are permitted on each parcel if the owner desires.
- Property taxes do not change. Yield taxes do not change.
- Conservation easement is perpetual.

Forest Legacy Program

- Protects Private Working Forestlands -- Provides certainty to the Forest Products Industry.
- A voluntary program using Conservation Easements
- At-risk private forestlands are the focus (risk of conversion to non-forest uses).
- National program, - competitive within each state and between states.
- Annual application (May 31st)
- Idaho Dept of Lands is the administrator and easement holder
- A Land Trust is required to be the program sponsor.
- Funding comes from the Farm Bill (Land & Water Conservation Fund)
- Funding pays for Conservation Easements (75% payment)
- 25,000 acres : currently in Boundary County within the Forest Legacy Program

The Nature Conservancy



- A non-profit Land Trust
- Largest conservation organization in the U.S.
- We work with private landowners to put conservation projects on the ground.
- We own land in Idaho (Ball Creek Farm, Hall Mtn, Cougar Bay)
- We are funded by private donations and public grants
- What we don't do: we don't hire lawyers, we don't spend time in court, we don't appeal or stop public forest management activities.